

Grey Coast

Buildings

Lower
Pulteneytown
Wick

If you would like any further information
please do not hesitate to contact us on:

01463 251132



The Highland Housing Alliance
Fairways, Castle Heather
Inverness IV2 6AA

info@highlandhousingalliance.com
www.highlandhousingalliance.com



Modern living

Reviving a historic community

In recent years, attention has been focused on Wick's historic harbour front, where a major conservation project has rejuvenated the ancient fishing quarter. Following the successful integration of Silver Darlings Close into the new community fabric, the Highland Housing Alliance is now offering four town houses and four apartments on a newly restored site, Grey Coast Buildings.

Delivering chic contemporary lifestyle opportunities within an area rich in history, these properties make a valuable contribution to the social fabric and restore the old fishing community buildings to the heart of community life.

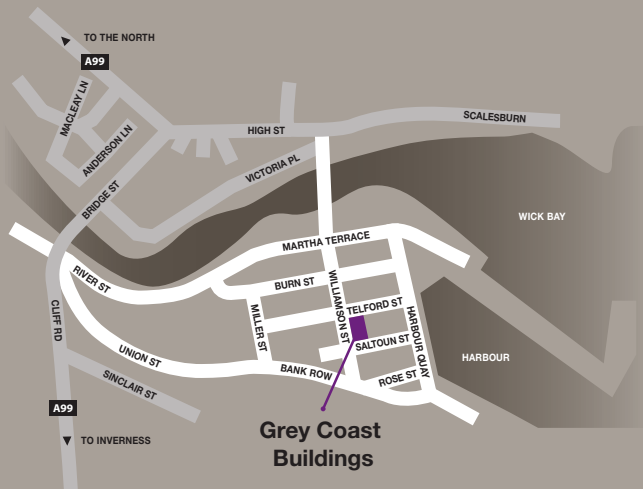


Contents

- 1 Modern living
- 2 Lower Pulteneytown
- 4 Heritage restored
- 8 Contemporary quality
- 10 Grey Coast Buildings

Floorplan

- 12 Plot 4, 2 bed townhouse
- 13 Plot 5, 2 bed townhouse
- 14 Plot 6/10, 1 bed studios
- 15 Plot 9/11, 1 bed apartments
- 16 Plot 7, 2 bed townhouse
- 17 Plot 8, 2 bed townhouse



2 Lower Pulteneytown

Revolutionary harbour town

Designed by the legendary Thomas Telford, Lower Pulteneytown represents the most complete example of his gift for planning.

The British Fisheries Society purchased the land in 1803, having identified the site as a development opportunity. By the time Telford was invited to design the new town, the harbour was under construction and the bridge at the north end, linking the site with Wick, was finished. Telford submitted his original plans in 1807; the final plans, held at Wick Museum, are dated 1811.

Telford's vision for the harbour town was a self-contained fishing community, with houses and accommodation for the vast migrant population that followed the herring fleets. During the 19th and early 20th centuries, the 'silver darlings' ruled the Highland economy, and Lower Pulteneytown was created to capitalise on the herring boom.

Historians have argued that this was the world's first purpose designed industrial community. Alongside living quarters, it encompassed a busy commercial sector, with sail makers, rope works, chandlers, boat builders and foundries. Everything the town needed arrived by sea, including salt boats from Runcorn. It even had its own police force, separate from the Wick constabulary, until the communities were merged in 1903.

Thousands of businesses and fishermen applied when Telford advertised the new harbour development. By 1830, the population was 2,100 and all lots taken, including the 240 houses. By the mid-19th century, Lower Pulteneytown was the herring capital of Europe.



Heritage restored

This historic site now offers home buyers the chance to live in a truly unique location, as the old buildings, warehouses and curing yards are given a new lease of life for the 21st century.

Grey Coast Buildings, originally a fish curing yard, has been reinvented as four town houses and four apartments in an attractive courtyard setting – the next phase of an ongoing plan to regenerate this ancient fishing community and create modern living and working spaces.





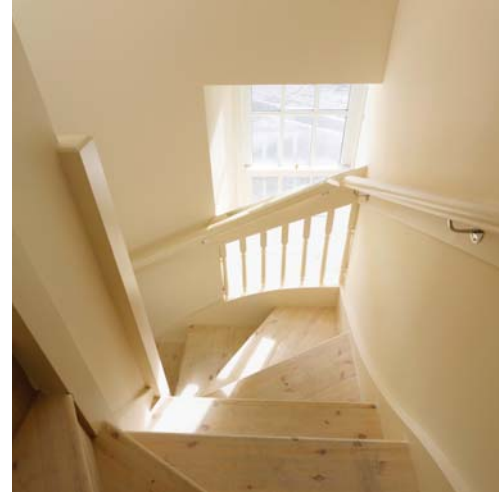
8 Contemporary quality

Thoughtful design

Clean and simple design styling throughout creates a light and uncluttered canvas for modern living. The overall feel is an understated style that respects the demands of contemporary lifestyles and the historic surroundings.

Our fitted kitchens feature sleek lines, maple finishes and black high-gloss work surfaces. They come with a ceramic hob, stainless steel fan oven, chimney extractor with carbon filter and integral washer/drier.

The bathroom fittings are white enamel, leaving space for you to add your own interior design touches.



Grey Coast



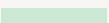



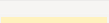
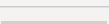

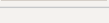
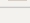
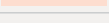



Buildings

With its enclosed courtyard, the development offers unique privacy within a town centre location.

The courtyard was previously used by fishermen to mend their nets and prepare their fish for transport.

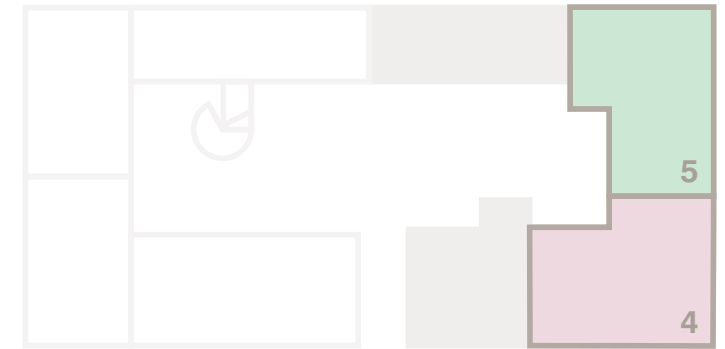
This communal space allows for individual patios combined with shared areas – ideal for those seeking a low maintenance lifestyle.

Key

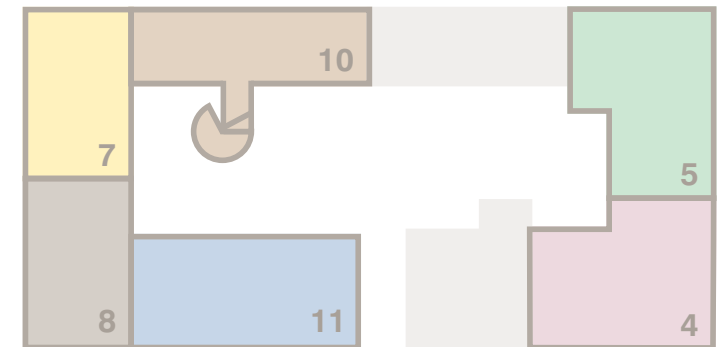
	Plot 4	2 bedroom townhouse	LIFT	
	Plot 5	2 bedroom townhouse	LIFT	
	Plot 6	1 bedroom studio		
	Plot 7	2 bedroom townhouse		
	Plot 8	2 bedroom townhouse		
	Plot 9	1 bedroom apartment		
	Plot 10	1 bedroom studio		
	Plot 11	1 bedroom apartment		

Plan

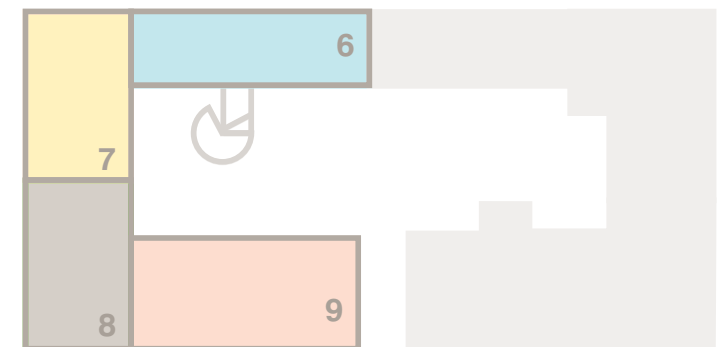
Second Floor



First Floor

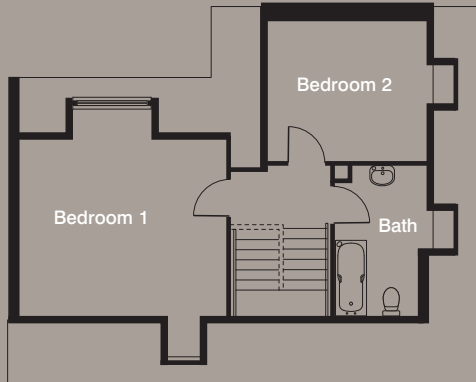


Ground Floor



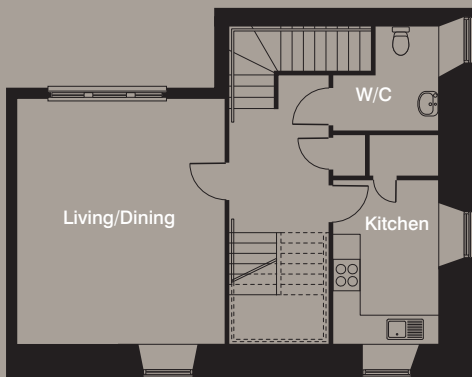
Plot 4 2 bed townhouse

Available to purchase through the Lift scheme.



Second Floor

Bedroom 1	4.51m x 3.93m	14'8" x 12'9"
Bedroom 2	3.12m x 3.50m	10'2" x 11'5"
Bathroom	3.35m x 2.05m	11'0" x 6'7"



First Floor

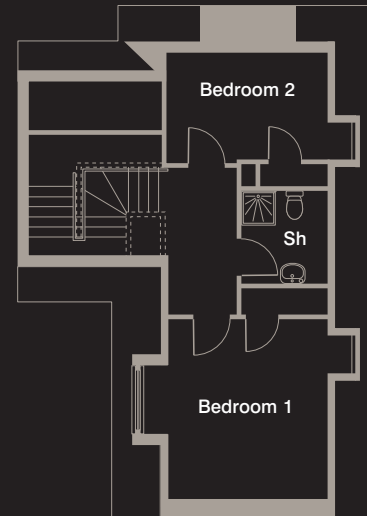
Living/Dining	5.40m x 4.51m	17'7" x 14'8"
Kitchen	2.66m x 2.35m	8'7" x 7'7"
W/C	2.35m x 2.30m	7'7" x 7'5"

Room dimensions are taken from the furthest points in each room. Every care has been taken in the preparation of this brochure, but the particulars do not form the basis of any contract.

LIFT

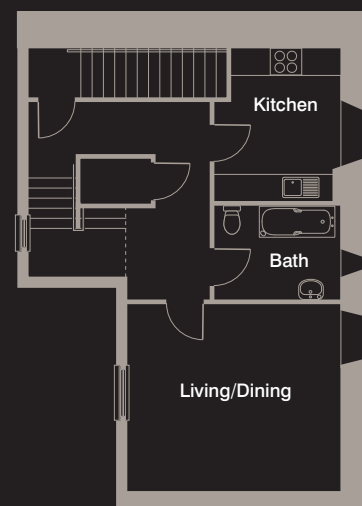
Plot 5 2 bed townhouse

Available to purchase through the Lift scheme.



Second Floor

Bedroom 1	3.98m x 3.50m	13'1" x 11'5"
Bedroom 2	3.55m x 2.38m	11'6" x 7'8"
Shower	2.06m x 1.90m	6'8" x 6'2"



First Floor

Living/Dining	4.66m x 4.15m	15'3" x 13'6"
Kitchen	2.84m x 2.20m	9'3" x 7'2"
Bathroom	2.84m x 2.09m	9'3" x 6'9"

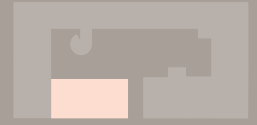
LIFT

14 Plot 6
1 bed studio

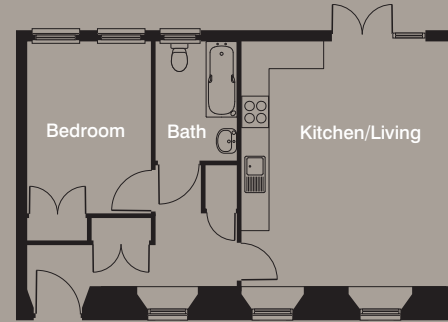


Kitchen/Living	5.58m x 3.12m	18'3" x 10'2"
Bedroom	3.58m x 3.12m	11'7" x 10'2"
Bathroom	2.60m x 1.80m	8'5" x 5'9"

Plot 9
1 bed apartment

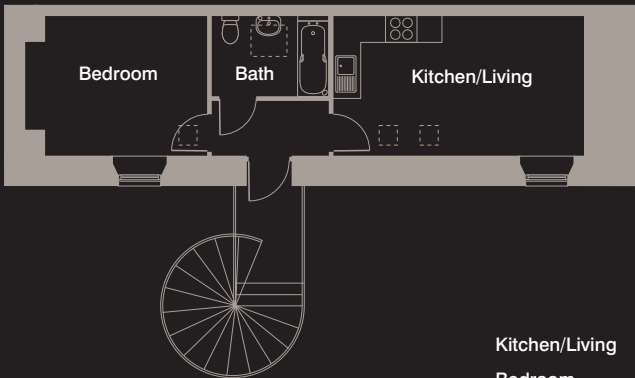


15



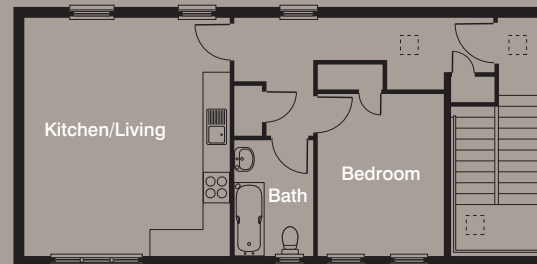
Kitchen/Living	5.40m x 4.68m	17'7" x 15'4"
Bedroom	3.78m x 2.75m	12'4" x 9'1"
Bathroom	2.61m x 1.81m	8'6" x 5'9"

Plot 10
1 bed studio



Kitchen/Living	5.58m x 3.12m	18'3" x 10'2"
Bedroom	3.58m x 3.12m	11'7" x 10'2"
Bathroom	2.60m x 1.80m	8'5" x 5'9"

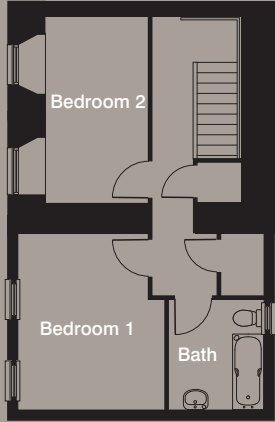
Plot 11
1 bed apartment



Kitchen/Living	5.40m x 4.68m	17'7" x 15'4"
Bedroom	3.67m x 2.90m	12'0" x 9'5"
Bathroom	2.61m x 1.81m	8'6" x 5'9"

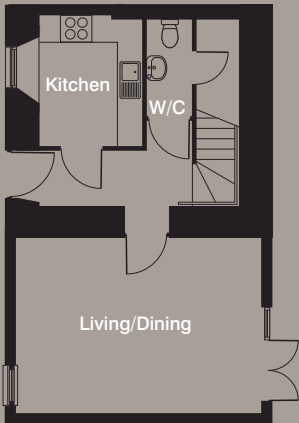
Room dimensions are taken from the furthest points in each room. Every care has been taken in the preparation of this brochure, but the particulars do not form the basis of any contract.

16 Plot 7
2 bed townhouse



First Floor

Bedroom 1	3.85m x 3.18m	12'6" x 10'4"
Bedroom 2	4.17m x 2.30m	13'7" x 7'5"
Bathroom	2.39m x 2.12m	7'9" x 6'10"



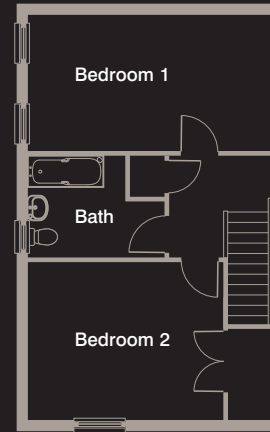
Ground Floor

Living/Dining	5.40m x 3.86m	17'7" x 12'7"
Kitchen	2.90m x 2.34m	9'5" x 7'7"
W/C	2.10m x 1.90m	6'9" x 6'2"

Plot 8
2 bed townhouse

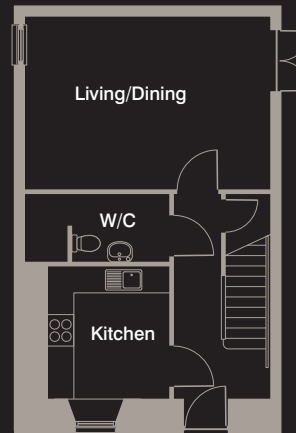


17



First Floor

Bedroom 1	5.40m x 2.99m	17'7" x 9'8"
Bedroom 2	4.29m x 3.49m	14'1" x 11'5"
Bathroom	2.27m x 2.22m	7'5" x 7'3"



Ground Floor

Living/Dining	5.40m x 3.80m	17'7" x 12'5"
Kitchen	2.96m x 2.71m	9'7" x 7'9"
W/C	3.19m x 1.50m	10'5" x 4'9"